

Evaluating a Comprehensive Suicide Prevention Model: Lessons Learned from the Colorado National Collaborative

Kristen Quinlan, Ph.D.
Felice Seigneur, MPH

EDC

About the Colorado National Collaborative (CNC)

- **Colorado-National Collaborative** is a partnership of local, state and national scientists and public health professionals working with communities to identify, promote and implement successful strategies for suicide prevention in Colorado.
- **Goal:** Develop, implement, and evaluate a comprehensive strategy that can be replicated nationwide.

History of the CNC

- In 2018, as the CNC was beginning, there were approximately 1,250 suicides among CO residents – the 10th highest in the nation.
- Researchers from CDC's Injury Control Research Center for Suicide Prevention selected CO as the location to test a comprehensive model of suicide prevention.
- CO and its national partners then selected 6 counties with the highest suicide/opioid burden to implement the program.
- Using an environmental scan to assess for existing programming, funded programming, political will, and capacity, the counties, state, and national partners selected a constellation of 6 strategies to implement

COLORADO-NATIONAL COLLABORATIVE



CONNECTEDNESS



ECONOMIC
STABILITY AND
SUPPORTS



EDUCATION
AND
AWARENESS



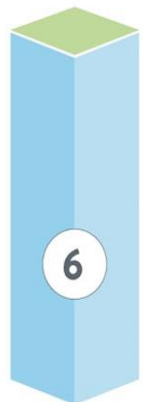
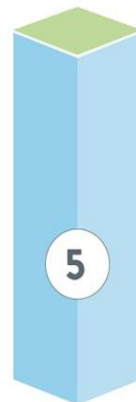
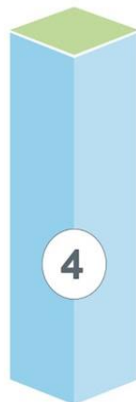
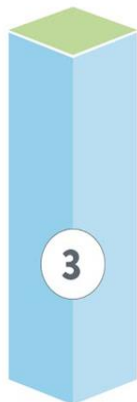
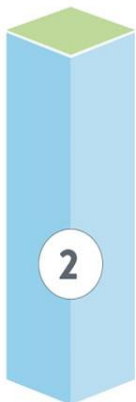
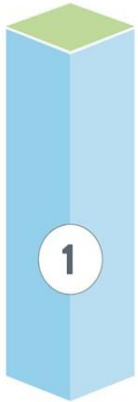
ACCESS
TO SAFER
SUICIDE CARE



LETHAL
MEANS
SAFETY



POSTVENTION



Short-Term Outcomes

- Promoting coping & problem-solving.
- Increasing opportunities for spaces.
- Increasing connectedness opportunities for the LGBTQ+ community

- Increase awareness of resources
- Increase access to economic benefits & affordable quality childcare

- Increase access to gatekeeper trainings
- Increase access to awareness campaigns
- Increase access to policy trainings

- Expand implementation of Zero Suicide
- Increase adoption of safer suicide care in primary care

- Expand gun shop project
- Increase lethal means safety trainings
- Expand medication take-back
- Increase safe storage public messaging
- Improve uptake of best practice opioid prescribing guidelines

- Expand survivor outreach & support
- Improve community postvention plans
- Improve responsible messaging & media reporting

Mid-Term Outcomes

Increase Connectedness

Improve Economic Stability & Supports

Improve Education & Awareness

Increase Access to Suicide Safer Care

Improve Lethal Means Safety

Improve Postvention

Long-Term Outcomes

Decrease Suicide Ideation

Decrease Suicide and Opioid-Related ED Visits

Decrease Hospitalizations for Suicidality, Opioids, & Firearm Injuries

Decrease Suicide Attempts

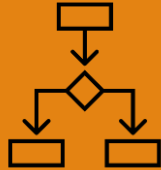
Impact

Decrease Suicide, Opioid, & Firearm-Related Mortality

A participatory evaluation fully incorporates stakeholders as leaders in all aspects of the evaluation. What does this mean in practice?



Open communication & peer-sharing



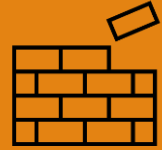
Shared decision making.



Thinking critically about data provision/ ownership, decision-making, and influence.



Minimizing burden



Capacity building & creating common language

What are some challenges to evaluation efforts?

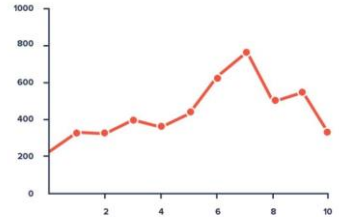
- Metric standardization
- ID of feasible, low-cost metrics
- Staggered implementation efforts
- Pre-existing community differences
- Community differences in political will (for implementation and evaluation)
- Funding and capacity issues



Context of State Evaluation Efforts

- Evaluation requirements from funders ASTHO, CDC, State General Fund
- Immediacy of collecting process metrics
- Desire to continue utilizing a collaborative approach
- Building capacity at local levels to evaluate comprehensive efforts

CNC Data Dashboard



- Web-based platform (password protected)
- Each county has their own dashboard, rolls up to the state level
- Customizable, includes state required indicators, but local users can add additional measures specific to their county's context
- Straddles the line between project management and data visualization tool

CNC Data Dashboard

Colorado National Collaborative Strategy Map



CNC Data Dashboard

Colorado National Collaborative Strategy Map



CNC Data Dashboard

INSIGHTVISION

Home Scorecards Reports Strategy Maps Soc

Colorado National Collaborative

Expand All Collapse All

Outcomes

- Decrease Suicide, Opioid and Firearm Related Mortality
- Decrease Suicidal Ideation
- Decrease Suicide and Opioid Related ED Visits
- Decrease Hospitalizations for Suicidality, Opioids, and FI
- Decrease Suicide Attempts

Strategy Outcomes

- Increase Connectedness
- Improve Economic Stability and Supports
- Improve Education and Awareness
- Improve Lethal Means Safety
- Improve Postvention
- Increase Access to Suicide Safer Care

Strategies

Promote Behavioral Health, Peer Support & Education Related to Coping Problem Solving Skills

- # of organizations that have hosted Mental Health First Aid trainings
- # of organizations/industries that support Man Therapy through use of materials and outreach
- % of county healthcare organizations with access to peer support specialists
- % of elementary schools that create or maintain at least one written policy with corresponding strategy(s) related to Social and Emotional Learning for students

Measure at a Glance

CNC: Decrease Suicide, Opioid and Firearm Related Mortality
Display Settings Apply

CNC: Rolling 3 Month Average Suicide Rate Per 100k - Colorado
Edit Print Embed

Time Period	Target Value	Actual Value
Sep 2021	17.28	20.77
Aug 2021	17.28	22.43
Jul 2021	17.28	22.12
Jun 2021	17.28	21.43
May 2021	17.28	20.55
Apr 2021	17.28	19.40
Mar 2021	17.28	20.92
Feb 2021	17.28	20.15
Jan 2021	17.28	21.41

Name

Target Value Current Value

N/A N/A

N/A N/A

N/A N/A

N/A N/A



COLORADO
Department of Public Health & Environment

Dissemination: Online Pillar Reports

- 6 pillars, 6 counties
- Incorporates text/story telling
- Can incorporate local content
- Includes embedded links to dashboard

Local Solutions To Data Collection: Environmental Scan

6. Organizations Serving Service Members, Veterans, and their Families (SMVF)

Please list names of SMVF organizations that you are aware of that offer peer to peer recreation, community service, or meaningful engagement activities:

- <https://coloradojcf.org/wp-content/uploads/2021/02/JCF-Resource-Guide-2021.pdf>
 - This resource does not specifically state whether orgs provide peer services.
- <https://homefrontmilitarynetwork.org/partners/>
 - The following were identified from this resource:
 - Building Warriors
 - Well-Spouse Foundation
 - Depression and Bipolar Support Alliance
 - Pikes Peak Amputee Connection
 - The Independence Center
 - Veteran X
- Brookdale Hospice Center of Denver (also serves CO Springs)
- Consider partnering with Peak Military Care Network to add questions to their partner survey?
- Mt Carmel

Solutions to Data Collection: Local Surveys

5. Does your organization have processes to ensure new staff receive suicide prevention training (such as QPR, ASIST, or Mental Health First AID) and refresher trainings as needed?

Yes

No

Comments

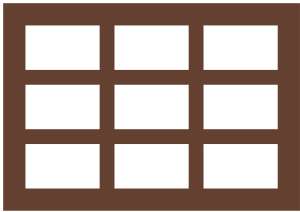
6. Does your organization have suicide prevention policies in place?

Yes

No

Comments

Other Solutions



Sharing Tracking
Tools



Leveraging
Communication



Dividing
Responsibility

Addressing Barriers and Challenges

Interpreting dashboard → Online Pillar Reports

Onboarding new staff → Orientation materials

Complex/shifting metrics → Data Dictionary

Balancing local data collection burden with capacity building

Laying the foundation for inferential forms of analyses

What will the CNC evaluation team be doing next?

Growing! Adding on new communities.

Continuing to refine metrics to assess progress on our equity and anti-discrimination work.

Refining our metrics (we have over 175!) to ensure continued fit, utility.

Thinking about what dissemination might look like, should the CNC show evidence of feasibility, acceptability and early efficacy.

Questions?

Contact us:

Kristen Quinlan: kquinlan@edc.org

Felice Seigneur: fseigneur@edc.org



Data and Evaluation: Driving Collective Impact

The first 6 slides are pulled directly from this presentation:

https://communityactionpartnership.com/wp-content/uploads/2018/08/8.15.18-Evaluating-Collective-Impact_FSG.pdf

Collective Impact is the commitment of a group of important actors from different sectors to a common agenda for solving a specific social problem at scale.



Achieving Large-Scale Change through Collective Impact Involves Five Key Elements

Common Agenda

- **Common understanding** of the problem
- **Shared vision** for change

Shared Measurement

- **Collecting data and measuring results**
- Focus on **performance management**
- **Shared accountability**

Mutually Reinforcing Activities

- **Differentiated approaches**
- Willingness to **adapt individual activities**
- **Coordination** through joint plan of action

Continuous Communication

- **Consistent and open communication**
- Focus on **building trust**

Backbone Support

- **Dedicated staff**
- Resources and skills to **convene** and **coordinate** participating organizations

Shared measurement is a critical piece of pursuing a collective impact initiative

Definition

Identifying common metrics for tracking progress toward a common agenda across organizations, and providing scalable platforms to share data, discuss learnings, and improve strategy and action

Benefits of Using Shared Measurement

- Improved Data Quality
- Tracking Progress Toward a Shared Goal
- Enabling Coordination and Collaboration
- Learning and Course Correction
- Catalyzing Action

What is shared measurement?



IS:

Common metrics that help us ask the questions:

WHAT progress are we making?

HOW does this information help us make better decisions?

IS NOT:

- Meant to measure the impact of a single organization or intervention
- Simply data collection
- Focused only (or mostly) on programmatic measures
- Meant to be punitive
- Meant to foster competition
- A once-a-year report
- Evaluation

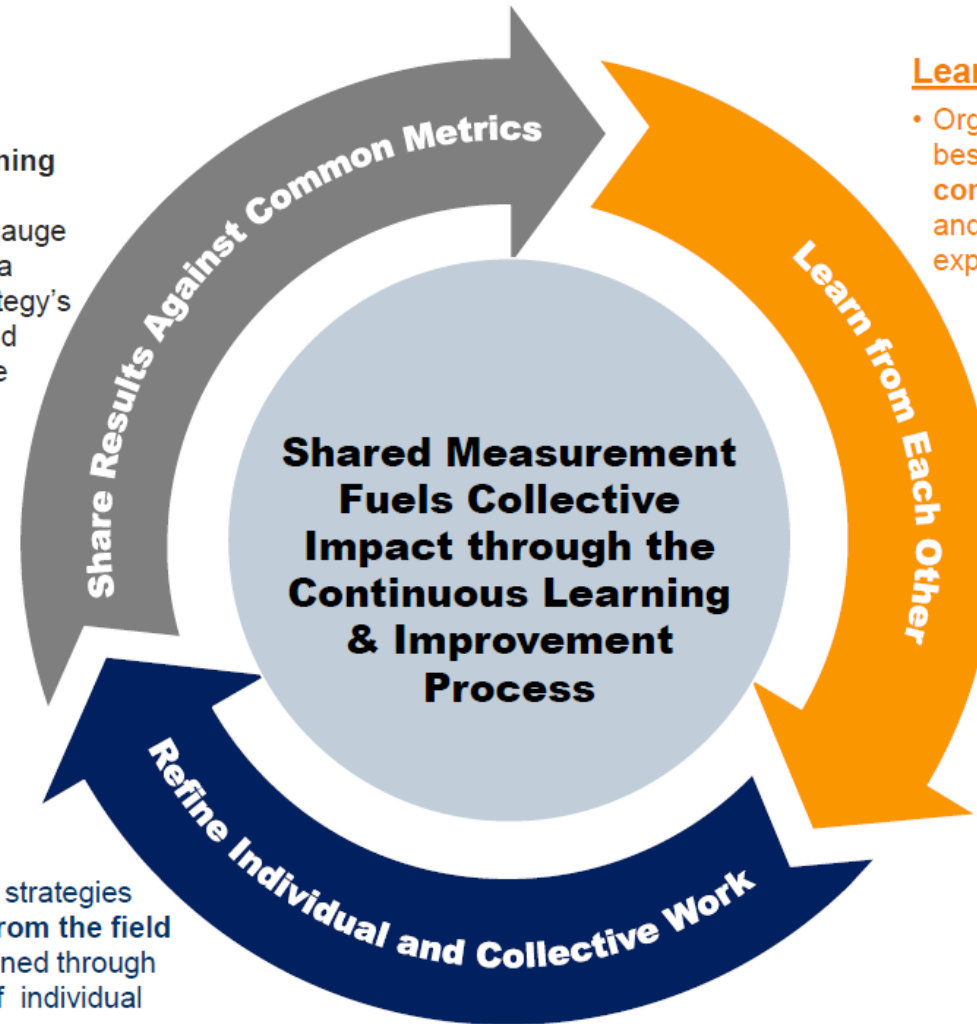
Shared measurement provides a common language for continuous learning and improvement

Share Results Against Common Metrics:

- Through continuous learning and improvement, organizations are able to gauge their performance against a Shared Measurement strategy's **common benchmarks** and evaluate their impact at the system level

Refine Individual and Collective Work:

- Organizations **refine** their strategies based upon key insights **from the field**
- Collective Impact is sustained through the **harmonized** impact of individual organizations



Learn from Each Other:

- Organizations are able to share best practices through a **common language of results** and learn from each other's experiences



Group Poll #2

Where is your collaborative in the process of implementing shared measurement?

- a) We are engaged in collective impact but have not yet begun to develop shared measures
- b) We are in the process of designing / developing our shared measures
- c) We have a fully developed shared measurement system
- d) N/a / we are not yet doing collective impact

Data and Evaluation Committee Purposes

- Serve as a community of researchers and data people – a learning collaborative for sharing information, surfacing challenges and problem-solving. Communication is key to success in this area.
- Stay updated on the landscape of data in the suicide prevention world.
- Provide formal recommendations and input to the Alliance executive committee and OHA.
- Be a resource and standard-bearer for data and evaluation within the Alliance.

We are transitioning slowly to a role as a committee where we are asked to review and comment on workplans, dashboards, performance measures. There is now sufficient work to REACT to and provide input.

Developing Shared Definitions and Data

- Understanding metrics, measures, surveillance... oh my!
- Differentiating implementation (process) from impact (outcome)

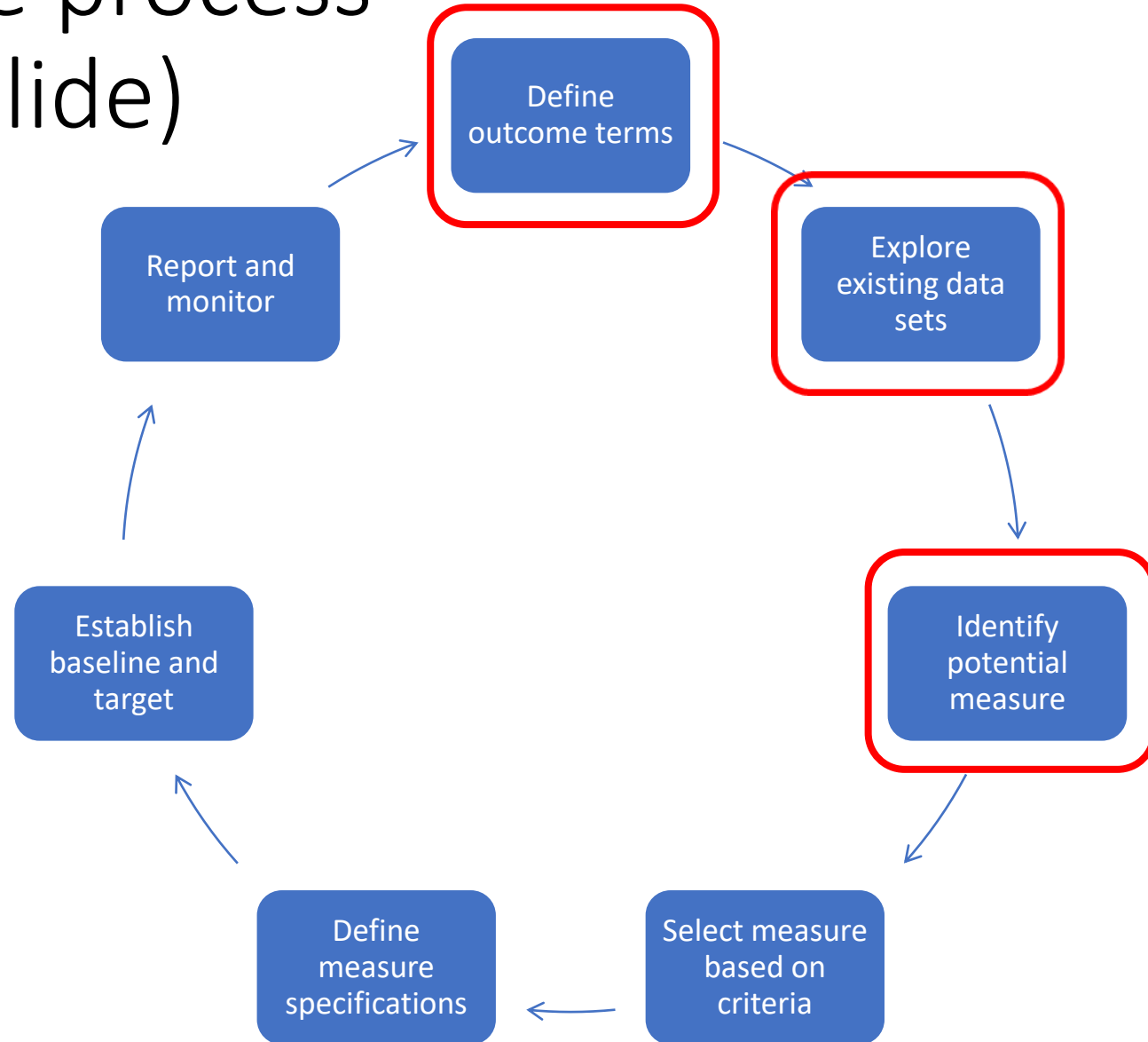
2023 Opportunities for Compiling Shared Measures and Data

Data orientation for Alliance members – DONE!

Data dashboard in the works

YSIPP metrics development – including Big River

This is an iterative process (System of Care Slide)



Example

GOAL: Build youth coping and problem-solving skills

ACTION: Use evidence-based social emotional curriculum

IMPLEMENTATION MEASURES (Adi's Act Scan?):

- Number of schools offering training

- Number of certified trainers actively training

- Number of youth trained

OUTCOME MEASURES:

- Pre-post test monitoring of skills acquisition

- School suspension rates for youth/schools who did and did not have training

METRICS/BENCHMARKS:

OR Student Health Survey: Proportion of students who answer "I don't know" – *"If you had a physical or mental health care problem during the school day, who would you go to at your school for help?"*

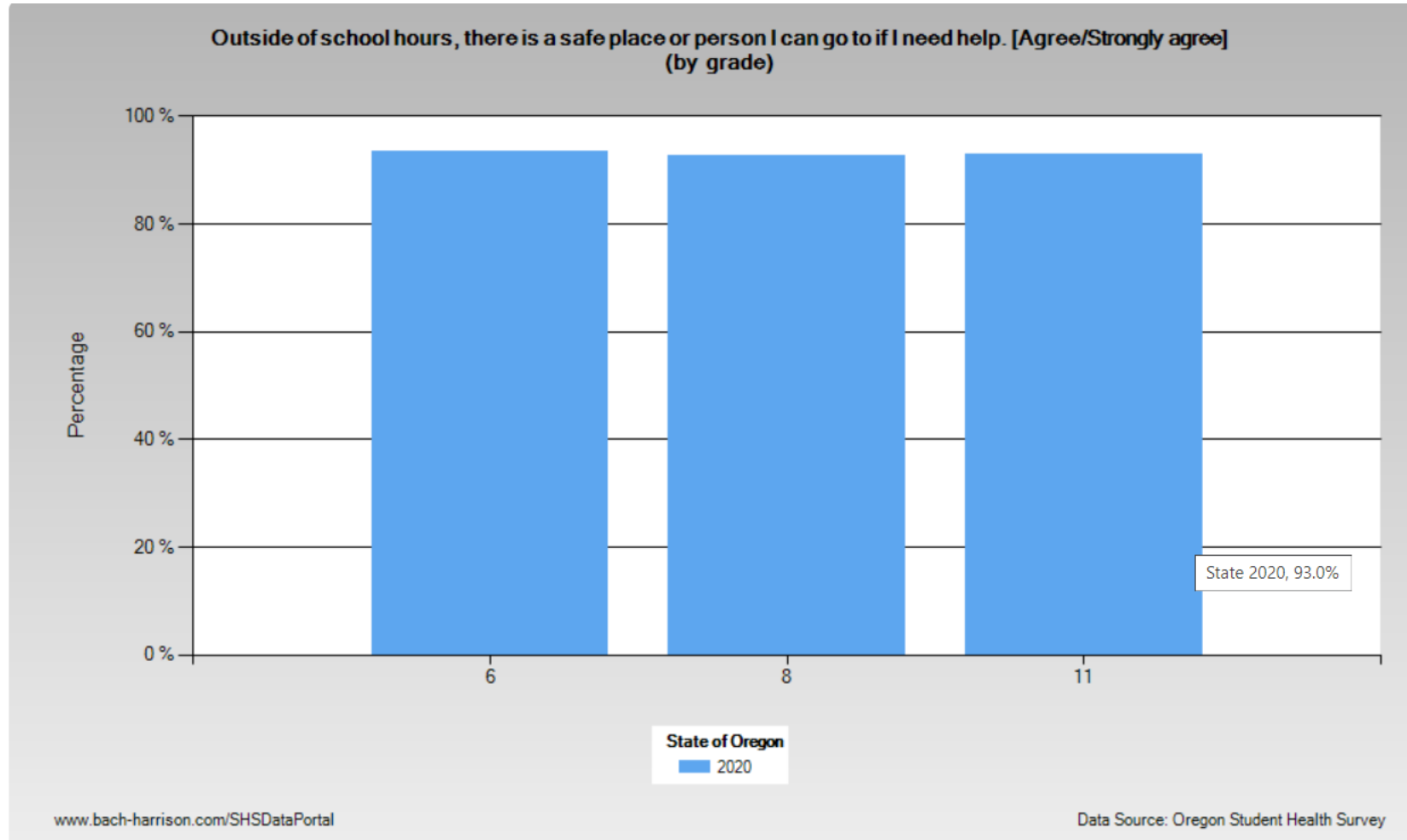
Outcome measurement – SOC Strategic Plan

- All youth have connections to their community.
- Both youth and families know how to access care when they need it.
- All youth have access to diverse providers who look like them.
- All youth graduate from high school.
- All youth have a plan to continue **with** their education or have a vocational plan and related identified services and supports.
- All youth have necessary independent living skills.
- All children and youth have a home and a place to live on their 21st birthday.
- Children in Child Welfare custody are served in home, wherever safety permits.
- The juvenile justice system is not used as a gateway to behavioral health services.
- Young people involved in multiple systems do not, after the age of 21, enter the adult correctional system.

Outcome measurement – SOC Strategic Plan

- All youth have connections to their community.
- Both youth and families know how to access care when they need it.
- All youth have access to diverse providers who look like them.
- All youth graduate from high school.
- All youth have a plan to continue with their education or have a vocational plan and related identified services and supports.
- All youth have necessary independent living skills.
- All children and youth have a home and a place to live on their 21st birthday.
- Children in Child Welfare custody are served in home, wherever safety permits.
- The juvenile justice system is not used as a gateway to behavioral health services.
- Young people involved in multiple systems do not, after the age of 21, enter the adult correctional system.

School Health Survey (Go to Cross Tabs)



How might data inform practice?

EXAMPLE:

- (1) Multi-generational learning of tribal languages
- (2) Afterschool activities and youth centers for Russian communities
- (3) A statewide drop-in zoom room for hearing impaired
- (4) Mental health outreach to Vietnamese faith community
- (5) Russian and Vietnamese speaking crisis call center staff

How might practice inform data?

Add a question that allows for telephone and virtual contacts:

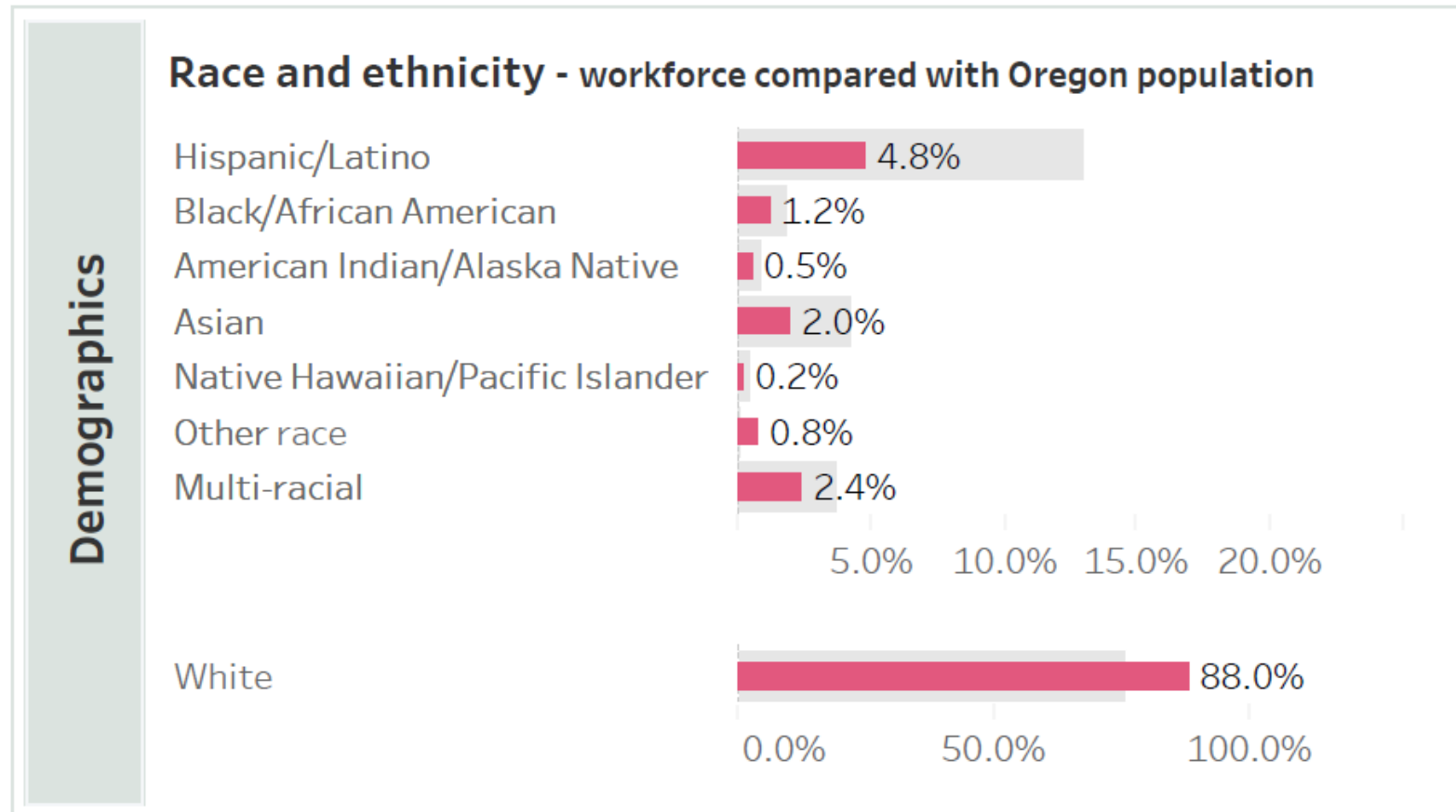
Something like:

Outside of school hours, I have a person to call or a virtual peer group I can contact if I need help or support.

Behavioral Health Workforce Data

[Oregon Healthcare Workforce Reporting Program](#)

Counselors & therapists practicing in Oregon in 2021



2023 Opportunities: Compiling Shared Measures and Data

- Data orientation for Alliance members – on our wish list
- Data dashboard in the works
- YSIPP metrics development

Collective Impact Forum:

https://collectiveimpactforum.swoogo.com/cias2023/2840296?utm_source=newsletter&utm_medium=email&utm_content=Learn%20More%20About%20the%20Action%20Summit&utm_campaign=20230227CIAS
[Keynotes](#)